

# 3,000 Watt BCE Bi-Directional Converter



## Product Overview

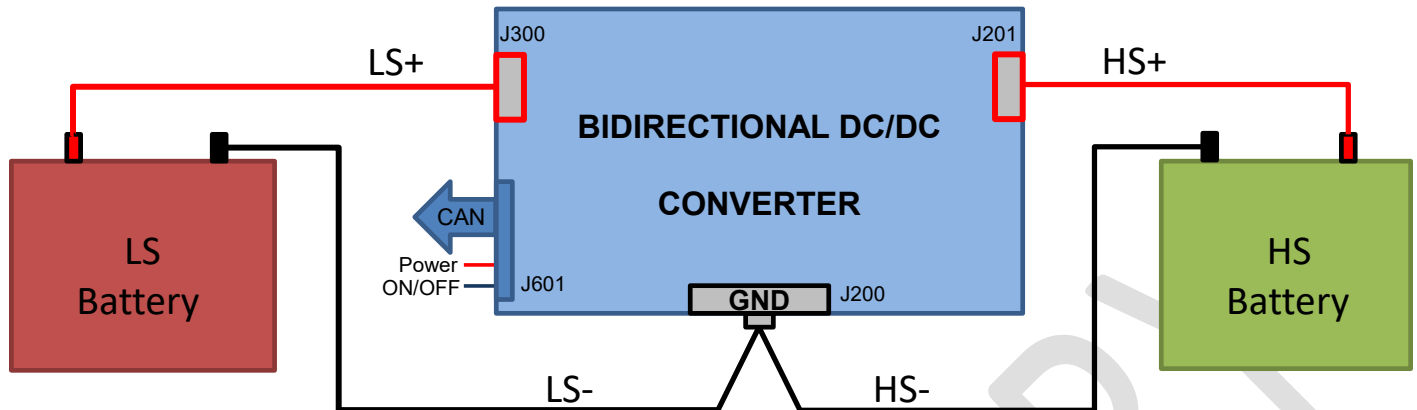
The 3,000 Watt BCE Bi-directional non-isolated DC/DC converter provides a complete solution for in-vehicle power distribution with 12V/48V battery configurations for a variety of applications including micro and mild hybrid automotive systems. The bi-directional DC/DC converter charges a low side (12V) battery during normal operation (buck mode) and charges or assists the high voltage (48V) battery in emergency situations (boost mode). The bi-directional DC/DC converter operates more as an ideal current source with variable direction, thus allowing energy transfer between two voltage domains. Voltage feedback maintains the output voltage within the acceptable operating range and eventually allows a custom charging profile for the battery pack. It regulates the average current flowing between the high voltage and low voltage ports in the direction selected via CAN interface. The BCE is available in a low profile IP67 rated liquid cooled, or air cooled enclosure. The dimensions of the enclosure are 7.9" x 7.7" x 1.8" with a weight of less than 4.5 lbs. The package makes the unit ideal for harsh shock and vibration requirements. Three M8 bushings are provided two for power connection and one for ground connections.

- IP67 Rated Liquid or Air Cooled Enclosure
- Automotive 12V/48V Battery System
- Low Side (LS): 12V Input Voltage Range: 6V to 18V
- High Side (HS): 48V Input Voltage Range: 24V to 58V
- Overcurrent, Overvoltage, & Over-temperature Protection. All protections are latching.
- Disconnect switch on LS (12V) and HS (48V)
- Reverse polarity protection on LS (12V)
- Constant Voltage and Constant Current Mode
- Average Current Mode Control
- Custom Charging Profile for the Battery Pack
- LS and HS Current Monitoring
- Internal temperature monitoring
- High power density
- Efficiency up to 97%
- Dimensions: 7.9" x 7.7" x 1.8"
- Excellent thermal performance
- Constant switching frequency
- CAN 2.0b Interface including remote ON/OFF
- Good shock and vibration damping
- Highly Integrated Solution
- RoHS Compliant

**Note: Add "-L" for Liquid cooled or "-A" for Air cooled to the end of the part number.  
i.e. 48S12.3K0B**

Model				48S12.3K0BCE					
Input Voltage Range [V]				Output current [A]		Output Power [W]		Efficiency [%]	
12V In		48V In		Buck	Boost	Buck	Boost	Buck	Boost
Min	Max	Min	Max	Max	Max	Max	Max	Max	Max
6	18	24	58	250	83	3000	3000		

# 3,000 Watt BCE Bi-Directional Converter



The BCE block diagram.

The BCE integrates a non-isolated four phase DC/DC converter for bi-directional current flow between two batteries (LS = 12V and HS = 48V), a disconnect switch on low side, and a CAN interface with five connections:

1. **Low Side Positive (LS+) Connector – J300:** Connected to the positive terminal of LS battery (12V) via M8 threaded press-fit bushing (WE 7460717).
2. **High Side positive (HS+) Connector – J201:** Connected to the positive terminal of HS battery (48V) via M8 threaded press-fit bushing (WE 7460717).
3. **Low Side Negative/GND (LS-) Connector - J301** – Separate GND connection to the low side battery (LS-).
4. **High Side Negative/GND (HS-) Connector – J200** Separate GND connection to the low side battery (LS-). J301 and J200 are shorted together inside the converter.
5. **CAN Interface Connector – J601:** Signal connector for the CAN interface, ON/OFF signal and power connection for powering the high speed CAN-Transceiver with BUS Wake-up and microcontroller inside the converter. Power connection has reverse polarity protection and is required for proper operation of the converter. (p/n 5-147278-4 TE Connectivity). Customer should use female connector with housing (TE Connectivity 104257-4) and contacts (TE Connectivity 1-104480-5).

## Functional Features:

The BCE is fully controlled via CAN interface. It uses a high speed CAN-Transceiver (TLE7251VSJ) for communication with the microcontroller. It provides control of the PWM control ICs, and protection and monitoring of the current and temperature monitoring features. The converter requires both LS and HS voltages to be present and within the specified range for the converter to operate. The microcontroller can be placed in hibernation mode.

The BCE includes a disconnect switch based on a back to-back N MOSFET configuration for the low side (12V battery). The converter has reverse voltage protection, short circuit protection as well as low standby current. The design includes a CAN 2.0b interface for complete control of the converter as well as monitoring LS current and internal temperature of the converter. The BCE is designed with a wide operational temperature range. Through holes are provided to allow easy mounting or the addition of a heatsink or base plate for extended temperature operation.

The converter's high efficiency and high power density are accomplished through the use of high-efficiency synchronous rectification technology, advanced electronic circuitry, and leading edge packaging and thermal design. This results in a highly reliable product. The diode emulation mode of the synchronous rectifiers prevents negative currents, but also enables discontinuous mode operation for improved efficiency with light loads. The converter operates at a fixed frequency and follows conservative component de-rating guidelines.

**Note that converter will not operate unless both batteries are present and their voltages are inside operating range.**

# 3,000 Watt BCE Bi-Directional Converter



## Electrical Specifications

Conditions: TA = 25 °C, Airflow = 200 LFM (1.0 m/s), Vin = 48VDC, unless otherwise specified. Specifications are subject to change without notice.

48S12.3K0BCE					
Parameter	Notes	Min.	Nom.	Max.	Units
<b>Absolute Maximum Ratings</b>					
Input Voltage					
High Side (48V)	Continuous	0		58	V
	Load Dump	0	70	75	V
Low Side (12V)	Continuous	-16		28	V
Operating Temperature	Baseplate (100% power)	-40		100	°C
Storage Temperature		-55		125	°C
<b>Isolation Characteristics and Safety</b>					
Isolation Voltage	Input to Baseplate & Output to Baseplate	250			V
<b>Feature Characteristics</b>					
Fixed Switching Frequency –Multiphase converter	Each phase		200		kHz
	Total 4 phases		800		kHz
TEMP monitor	PCB temperature	-40°C		+125	°C
	Accuracy	-2	+1	+4	%
All Protections latching					
Over-temperature Shutdown	PCB Temperature – Fixed and Latching	105	110	120	°C
ON/OFF Remote Control – Negative Logic					
ON state	Pin shorted to GND or			0.4	V
Control Current	Sinking			0.16	mA
OFF state		1.8			V
Control current	12V applied			0.05	mA
CAN Baud Rate			500		Kbps
<b>Thermal Characteristics</b>					
Thermal resistance Baseplate to Ambient				TBD	°C/W

# 3,000 Watt BCE Bi-Directional Converter



## Electrical Specifications Buck Mode:

Conditions:  $T_A = 25\text{ }^\circ\text{C}$ , Airflow = 200 LFM (1.0 m/s),  $V_{in} = 48\text{VDC}$ ,  $V_o = 13.8\text{V}$  unless otherwise specified. Specifications are subject to change without notice.

48S12.3K0BCE – BUCK MODE					
Parameter	Notes	Min.	Nom.	Max.	Units
<b>High Side (Input) Characteristics</b>					
Operating Voltage Range		24	48	58	V
Under Voltage Lockout	Latching				
Turn-on Threshold	Default		23.9		V
Turn-off Threshold	Default		23.4		V
	Programmable	22.5		62	V
Lockout Hysteresis Voltage	Default		0.5		V
Overvoltage Protection	Default			57	V
	Programmable	24		70	V
Maximum High Side Current	VHS = 36V, VLS=14V, ILS=250A ( 3500W )		101.2		A
	VHS = 48V, VLS=14V, ILS=250A (3500W )		76.5		A
Stand-by Current	Converter Disabled and in hibernation		TBD		$\mu\text{A}$
<b>Output (Low Side) Characteristics</b>					
Overvoltage Protection	Default value		20		V
	Programmable	6		25	V
Undervoltage Protection	Default		5.4		V
	Programmable	5.4		20	V
LS Stand-by Current	Converter Disabled and in hibernation		TBD		$\mu\text{A}$
<b>Constant Voltage Mode</b>					
Output voltage range	Programmable via CAN interface	9	13.2	20	V
Output Voltage Set Point Accuracy	At 115A load current		+/-1		%
<b>Constant Current Mode</b>					
Output Current Range/Overcurrent Protection	Programmable via CAN interface (ISET)	1		250	A
Output Current Regulation	25A < Load Current < 250A		+/-1		%
Output Current Set Point Accuracy	50A < Load Current < 250A		+/-1		%
Low Side Current Monitor (Read back)	25A < Load Current < 250A		2		%
<b>Efficiency</b>					
ILS = 107A (1500W) <sup>1)</sup>	$V_{in} = 48\text{V}$ , $V_o = 14\text{V}$	95.1	95.8	96.6	%
ILS = 215A (3000W) <sup>1)</sup>	$V_{in} = 48\text{V}$ , $V_o = 14\text{V}$ <sup>1)</sup>	94.7	95.5	96.3	%

<sup>1)</sup> Voltages measured at converter terminals.

# 3,000 Watt BCE Bi-Directional Converter



## Electrical Specifications Boost Mode:

Conditions:  $T_A = 25\text{ }^\circ\text{C}$ , Airflow = 200 LFM (1.0 m/s),  $V_{in} = 13.8\text{VDC}$ ,  $V_o = 48\text{V}$  unless otherwise specified. Specifications are subject to change without notice.

48S12.3K0BCE – BOOST MODE					
Parameter	Notes	Min.	Nom.	Max.	Units
<b>Low Side (Input) Characteristic</b>					
Operating Voltage Range		7	14	17	V
Under Voltage Lockout	Latching				
Turn-on Threshold	Default		5.9		V
Turn-off Threshold	Default		5.4	6	V
	Programmable	5.4		20	V
Lockout Hysteresis Voltage	Default		0.5		V
Overvoltage Protection	Default			20	V
	Programmable	6	TBD	25	V
Maximum Low Side Current	VLS = 8V		250		A
	VLS = 14V		230		A
Stand-by Current	Converter Disabled and in hibernation		TBD		$\mu\text{A}$
<b>High Side (Output) Characteristics</b>					
Overvoltage Protection	Default value		57		V
	Programmable	24		70V	V
Undervoltage Protection	Default	23.4			V
	Programmable	22.5		62	V
Stand-by Current	Converter Disabled and in hibernation		TBD		$\mu\text{A}$
<b>Constant Voltage Mode</b>					
Output voltage range	Programmable via CAN interface	24	48	54	V
Output Voltage Set Point Accuracy	At 3A load current		+/-1		%
<b>Constant Current Mode</b>					
Output Current Range LS current	Programmable via CAN interface (ISET)	1		250	A
Output Current Regulation			+/-1		%
Output Current Set Point Accuracy	At ILS = 37A		-7.5		%
	At ILS = 74A		-2.7		%
Low Side Current Monitor (Read back)	25A < ILS < 250A		-2		%
High Side Current Monitor (Read back)	7A < IHS < 62.5A				%
<b>Efficiency</b>					
IHS = 31.5A (1500W)	$V_{in} = 14\text{V}$ , $V_o = 48\text{V}^{(1)}$	95	95.8	96.5	%
IHS = 62.5A (3000W)	$V_{in} = 14\text{V}$ , $V_o = 48\text{V}^{(1)}$	94.7	95.5	96.5	%

<sup>1)</sup> Voltages measured at converter terminals.

# 3,000 Watt BCE Bi-Directional Converter



**Environmental and Mechanical Specifications.** Specifications are subject to change without notice.

General Parameters					
Parameter	Note	Min.	Nom.	Max.	Units
<b>Environmental</b>					
Operating Humidity	Non-condensing			95	%
Storage Humidity	Non-condensing			95	%
ROHS Compliance <sup>1</sup>	See Calex Website <a href="http://www.calex.com/pdf/ROHS.pdf">http://www.calex.com/pdf/ROHS.pdf</a> for the complete RoHS Compliance statement				
Shock and Vibration	Designed to meet MIL-STD-810G for functional shock and vibration.				
Water washability	Not recommended for water wash process. Contact the factory for more information.				
<b>Mechanical</b>					
Weight			4.5		Lbs.
			2		Kg
Dimensions		7.9 x 7.7 x 1.8			In
		200 x 196 x 46			mm
Material		Aluminum			
Finish					
IP Rating		IP67			
Power Terminal ( Thread height)			1.18		In
Material		Brass			
Surface		Tin			
Tightening Torque		8.85 in/lbs			
Rated Current	Low Side	250 A			
External Thread		M8			
Coolant Temperature Range		-40		+65	°C
Coolant Flow Rate					
Pressure Drop					

Additional Notes:

<sup>1</sup> The RoHS marking is as follows



# 3,000 Watt BCE Bi-Directional Converter



## CAN Functions

The following functions are fully controlled via CAN interface:

- Hibernation state
- BUS Wake-up and ON/OFF
- Current and voltage set points
- Current direction
- Protection threshold: Undervoltage, Overvoltage and Overtemperature

In addition, the BCE provides low side current monitoring and internal PCB temperature monitoring. High speed CAN-Transceiver (TLE7251VSJ) is employed for communication between the CAN interface and the microcontroller inside the converter. The converter requires both voltages to be present, the high side and low side voltages must be inside the specified range, in order to operate.

All protective functions are latching and reset can only be accomplished via the CAN interface. The converter has default limits (minimum and maximum) for current and voltage set points as well as for undervoltage, overvoltage and overtemperature thresholds. Note that the threshold for all protective features can be programmed via CAN, as long as the programmed value is inside the default limits (See spec). The converter will shut down and latch if the set points (voltage and current) and thresholds for all protections are set outside of the default limits. Contact the factory for CAN interface: Command and Status Message.

The BCE regulates the average current flowing between the high voltage and low voltage ports in the direction specified by the DIR signal. It is designed to operate in constant current mode (CCM) or constant voltage mode (CVM). In the constant current mode, the low side current is programmed and regulated regardless if the converter is in buck or boost mode. When operated in the constant voltage mode, the programmed current (ISET) has to be greater than the actual LS current. There is minimum load current, for both the low side (buck mode) and the high side (boost mode) required for the converter to regulate the output voltage.

The direction of the current can be changed on the fly, in which case the converter will reduce the LS current to zero and start in different mode (reversing the current direction) with a time delay of 30 msec (typ.) as shown in Figs. 15-16. Note that ISET needs to be inside the default limits for the given mode of operation (See Specification).

The BCE includes a disconnect switch based on a back to-back N MOSFET configuration for the low side (12V battery). The converter has reverse voltage protection, short circuit protection as well as low standby current for the low side.

The converter includes a disconnect switch based on an N MOSFET for the high side battery and does not provide high side reverse voltage polarity protection.

Pin	Label	Function
1	CANH	CAN Bus High Level I/O ; "high" in "dominant" state
2	CANL	CAN Bus Low Level I/O ; "low" in "dominant" state
3	POWER <sup>1)</sup>	External power supply voltage (from LS battery) to CAN interface and microcontroller
4	ON/OFF	TTL input with internal pull up, referenced to LS- pin, used to turn converter on and off
5	GND	Connected to LS- and HS- in the converter

- 1) External power is required to provide initial power to CAN interface IC and microcontroller inside the converter. Internal control circuit has a separate bias derived from the High Side Voltage. Once internal bias is activated, only the CAN interface is powered with the external power supply. If the external power is removed during regular operation of the converter, the CAN communication will not be interrupted.

# 3,000 Watt BCE Bi-Directional Converter



## Operational Notes: Input Fusing

The BCE converter provides an electronic disconnect switch based on back-to-back 40V rated N MOSFETs on the low side. It also has 100V MOSFET on the high side for disconnecting converter from HS battery in case of internal short.

## Reverse Voltage Polarity Protection

The BCE converter has input reverse polarity protection on the low side (12V battery) only. If the input voltage polarity on the high side (48V battery) is reversed, internal diodes will become forward biased and draw excessive current from the power source. If the power source is not current limited or an external input fuse or external disconnect switch is not used, the converter could be permanently damaged.

## Undervoltage Protection

For proper operation, it is required to have voltage present on both the HS and LS terminals. The BCE converter monitors the high side and low side voltages and will start and regulate properly only if both voltages exceed the corresponding Turn-on thresholds (See Specification) and remain at or above Turn-on threshold. The converter will turn-off when either of the two voltages drop below their corresponding Turn-off threshold (See specification), and will latch off. The built-in hysteresis prevents the converter from shutting down at the low input voltage near the Turn-on threshold. The converter can be restarted only via CAN interface once both voltages are above their Turn-on thresholds and the ON/OFF pin is in logic level low state. Note: the undervoltage circuit has hysteresis only for the high side voltage when the converter operates in the buck mode and for low side voltage when the converter operates in the boost mode. Once the undervoltage threshold is reached, the converter shuts down and latches off. The user should take into account the voltage drop due to resistive ( $I \cdot R$ ) and inductive voltage drops in the power lines to make sure the voltage at the converter's terminals is always above the Turn-off threshold level under all operating conditions.

If the values for the undervoltage protection are not provided via the CAN interface, the converter will use default values (See spec).

## Input Source Impedance

Because of the switching nature and negative input impedance of DC/DC converters, the input of these converters must be driven from the source with both low AC impedance and DC input regulation.

The low profile of the BCE converter is optimized for a power source cable length of 2m (6.5 ft) for High Side battery and up to 4m (13 ft) for low side battery.

The DC input regulation, associated with the resistance between the input power source and the input of the converter, plays a significant role in low input voltage applications such as 12V battery systems.

Note that the input voltage at the input terminals must never decrease below the Turn-off threshold under all load conditions during operation.

## ON/OFF (J601 – pin 4)

The ON/OFF pin is used in conjunction with the CAN interface and needs to be in the active state (logic level low  $< 0.4V$ ) in order to enable the converter via CAN interface.

Switching voltage level on the ON/OFF pin from low to high ( $>1.8V$ ) or left open will shut down and latch the converter. Switching the ON/OFF voltage from logic high to logic low will not enable the converter until the next command for enabling the converter via CAN interface is generated.

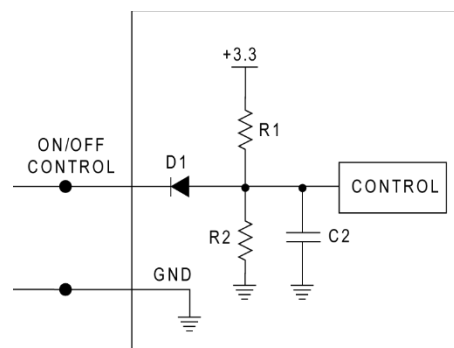


Fig. 1: Circuit configuration for ON/OFF function.

TTL Logic Level - The range between 0.4V and 1.8V is considered the dead-band. Operation in the dead-band is not recommended.



# 3,000 Watt BCE Bi-Directional Converter



## Constant Current Mode and Direction Select

The converter operates as an ideal current source with variable direction when the output voltage is lower than the voltage specified by the CAN interface. This configuration allows energy transfer between the two voltage domains (batteries). Only the low side domain current is directly programmed and regulated in both modes of operation (buck and boost). The current can be programmed in the range of  $ISET = 1A-250A$ . The converter has an internal soft start for ISET to reduce inductive voltage drop in the power cables (See Figs. 11-14) during both turn-on and turn-off. The converter will not operate if  $ISET = 0$  or it is outside the limits. Current level ISET can be changed on the fly.

The direction of the current can be changed dynamically during operation. In that case, the converter will shut down and change the mode of operation through the internal soft start thus eliminating surge current during the direction change (See Figs.15-16).

## Current Monitoring

The converter provides LS and HS current monitor read back value via CAN interface. It has a positive value when converter operates in buck mode and a negative value when converter operates in boost mode.

## Constant Voltage Mode

When the load current is lower than the programmed current, ISET, the converter will operate in the voltage mode regulating the output voltage at the level set by the CAN interface. The range of both voltages is provided in the specification table. The converter will not operate if the voltage level programmed via the CAN interface is outside the range. If the load current exceeds the ISET current level, the output voltage will reduce and the converter will enter the constant current mode regulating the low side current.

## Minimum Load Current Requirement

The converter implements synchronous rectification for improved efficiency. Diode emulation mode of the synchronous rectifiers is implemented to prevent negative currents on both sides and also enables discontinuous conduction mode of operation for improved efficiency with light loads. With both batteries connected, the converter will operate in constant

voltage mode, even at no load condition. Note that the minimum value for ISET is 1 A.

## Output Overcurrent Protection (OCP)

The converter senses both LS and HS currents. Average LS current is limited at ISET level when converter operates in constant current mode. Additional protection on the LS is provided by cycle by cycle peak current limit. Low side (Inductor current) is monitored and limited to the current level set by the CAN interface ( $ISET = 1A-250A$ ). HS current is also monitored and provides additional protection at typ. +/- 96A in case of overload or short circuit. Once OCP threshold is tripped, internal logic disconnects converter from both, LS and HS batteries via corresponding disconnect switches.

## Buck Mode

If the load current increases above the maximum limiting level, the converter enters constant current mode of operation and the low side voltage (output voltage) will be reduced. When it drops below the turn-off threshold for the low side terminal (12V), the undervoltage protection will be activated and the converter will shut down, turn-off the disconnect switch and latch off.

The converter can only turn-on via the CAN interface. Note: the converter will not start if the low side voltage is below the turn-on threshold so a startup into a shorted low side is prevented.

## Boost Mode

In the boost mode, the output current on the high side terminal is indirectly limited by the inductor (LS) current. If the load current increases above the maximum limiting level defined by ISET, converter operates in constant current mode and the high side voltage (output voltage) will be reduced. When it drops below the turn-off threshold for the high side terminal (48V), the undervoltage protection will be activated and the converter will shut down, turning off both the low side and the high side disconnect switches and latch off.

The converter can only turn-on via the CAN interface. Note: that the converter will not start if the high side voltage is below the turn-on threshold so that startup into a shorted high side is prevented.

# 3,000 Watt BCE Bi-Directional Converter



## Output Overvoltage Protection (OVP)

The converter will shut down if either of the terminal voltages (low side or high side) is above their corresponding thresholds of the OVP circuitry. Once the converter has shut down, it will remain latched off. Overvoltage thresholds can be programmed via the CAN interface, but must be inside the limits provided in the spec table. If the CAN command requires an OVP threshold above the max limit set internally, the converter will shut down and remain latched.

## Over-temperature Protection (OTP)

The BCE converter has two levels of over temperature protection. The first level provides a voltage proportional to the average PCB temperature and this signal can be used by end user to either adjust the operation of the converter (e.g. reduce current) or set a disable for the converter when the temperature reaches a predetermined level. The second level of over temperature protection is provided by temperature switches with a fixed threshold of 120°C. The switches sense the temperature of the PCB in two different locations. The converter will shut down when the temperature exceeds 120°C. The temperature threshold hysteresis is typically 10°C.

Once the over temperature protection is tripped, the converter will shut down and latch off. Restarting the converter requires an enable from the CAN interface.

## Thermal Consideration

The BCE converter can operate in a variety of thermal environments. However, in order to ensure reliable

operation of the converter, sufficient cooling should be provided. The BCE converter has a base plate with through holes on the side to allow easy mounting or addition of a heatsink, or base plate for extended temperature operation.

The metal cover on the top of the converter is not used for cooling as it serves as protection for the components on the PCB. In order to improve the thermal performance, the power components inside the unit are thermally coupled to the baseplate. In addition, the thermal performance of the converter is enhanced by use of the power terminals. Heat is removed from the converter by conduction, convection and radiation. In order to achieve the required performance, several factors such as ambient temperature, airflow, power dissipation, converter orientation, (how the converter is mounted), that need to be taken into account

It is highly recommended to measure the temperature in the middle of the baseplate, in each particular application to ensure that proper cooling of the converter is provided.

A reduction in the operating temperature of the converter will result in an increased reliability.

## Thermal Derating

The converter is cooled entirely via the base plate, and via power terminals (J200, J201, J300) and power cables connected to the batteries.

# 3,000 Watt BCE Bi-Directional Converter



## Test Configuration

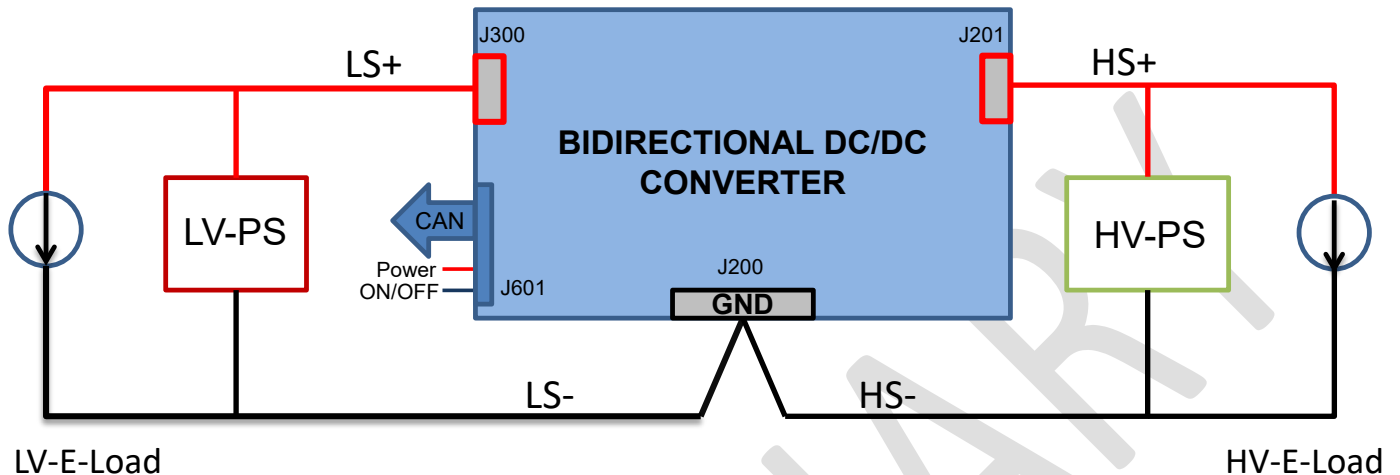


Fig. 2: The bench setup used to operate 48S12.3K0BCE and take measurements provided in data sheet. The combination of the Electronic Load (E-Load) and Bench Power Supply (PS) emulates a battery capable of both sourcing and sinking current.

For testing converter in constant current mode:

### **Buck Mode:**

- LV-PS needs to be set at a lower a value than VSET by the CAN interface and be able to provide current to support LS-E-Load current.
- LS-E-Load needs to be set to have current higher (10% - 20%) than ISET by the CAN interface.
- HV-PS should be capable of providing maximum required power.
- HV-E-Load is not required.

### **Boost Mode:**

- HV-PS needs to be set at a lower value than VSET by the CAN interface and be able to provide current to support HS-E-Load current.
- HS-E-Load needs to be set to have current higher (10% - 20%) than ISET by CAN interface.
- LV-PS should be capable of providing maximum required power.
- LV-E-Load is not required

### **Direction change:**

- LV-PS and HV-PS need to be set at a lower value than VSET by the CAN interface and be able to provide current to support LS-E-Load and HS-E-Load current, respectively.
- LS-E-Load and HS-E-Load need to be set to have current higher (10%-20%) than ISET by CAN interface.

# 3,000 Watt BCE Bi-Directional Converter



## Characteristic Curves:

### Efficiency and Power Dissipation in Buck Mode

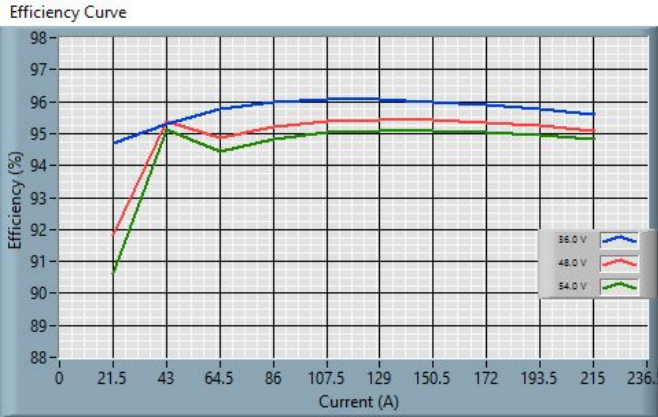


Fig. 3: 48S12.3K0BCE Efficiency Curve – Buck Mode, Vo=14V.

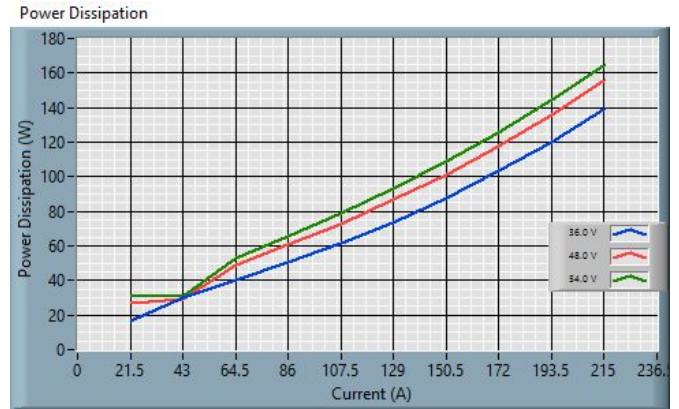


Fig. 5: 48S12.3K0BCE Power Dissipation – Buck Mode, Vo=14V.

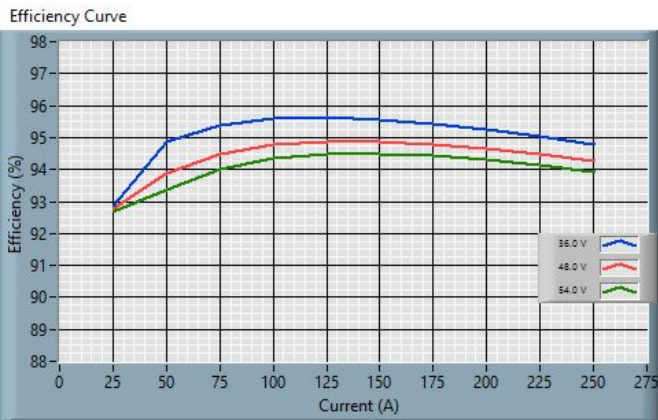


Fig. 4: 48S12.3K0BCE Efficiency Curve – Buck Mode, Vo=12V.

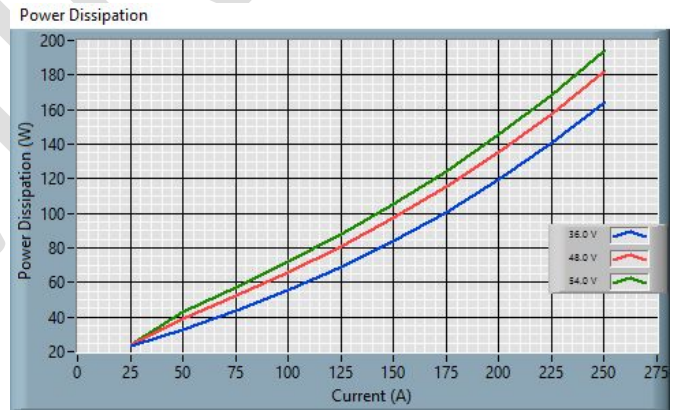


Fig. 6: 48S12.3K0BCE (Power Dissipation – Buck Mode, Vo=12V.

# 3,000 Watt BCE Bi-Directional Converter



## Characteristic Curves:

### Efficiency and Power Dissipation in Boost Mode

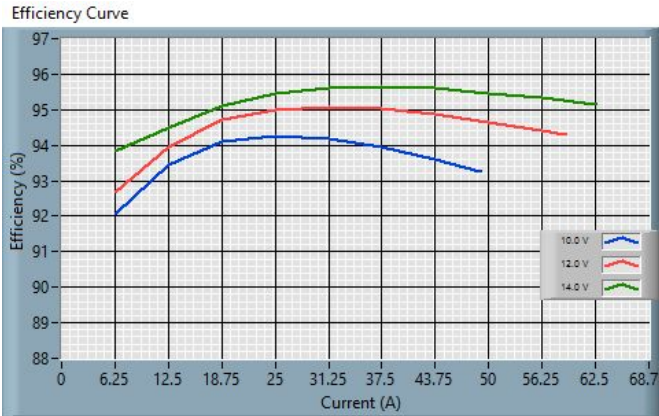


Fig. 7: 48S12.3K0BCE Efficiency Curve – Boost Mode, Vo=48V

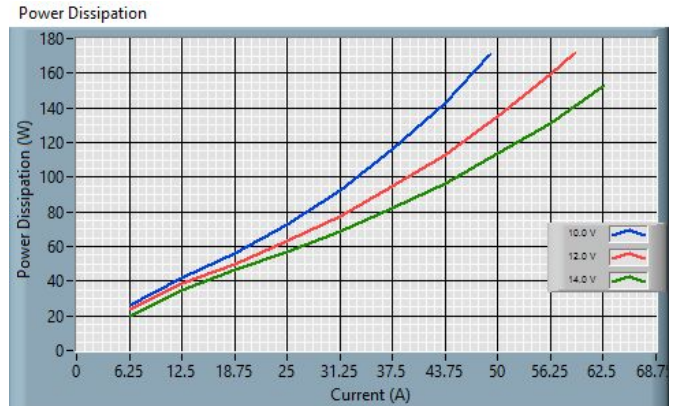


Fig. 9: 48S12.3K0BCE Power Dissipation – Boost Mode Vo=48V.

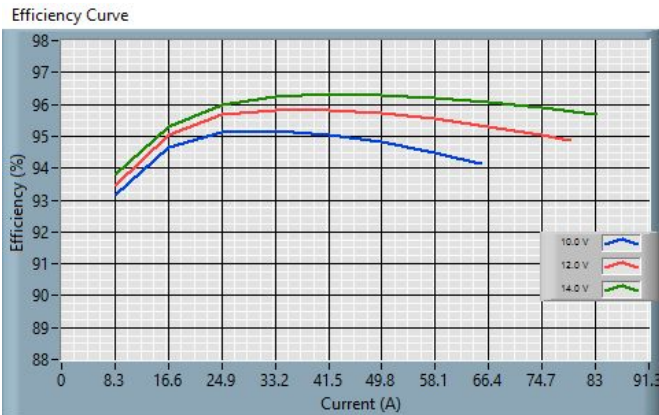


Fig. 8: 48S12.3K0BCE Efficiency Curve – Boost Mode, Vo=36V

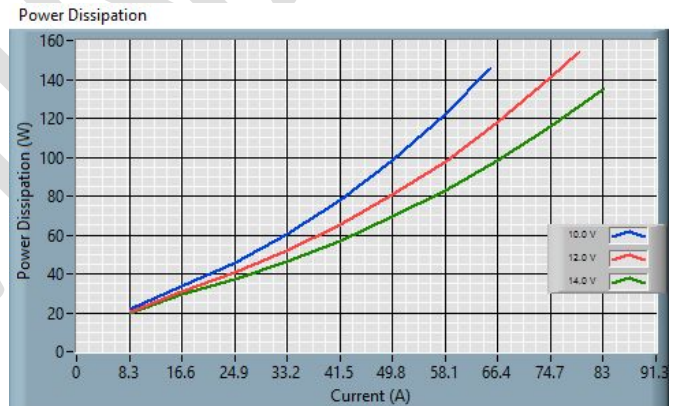
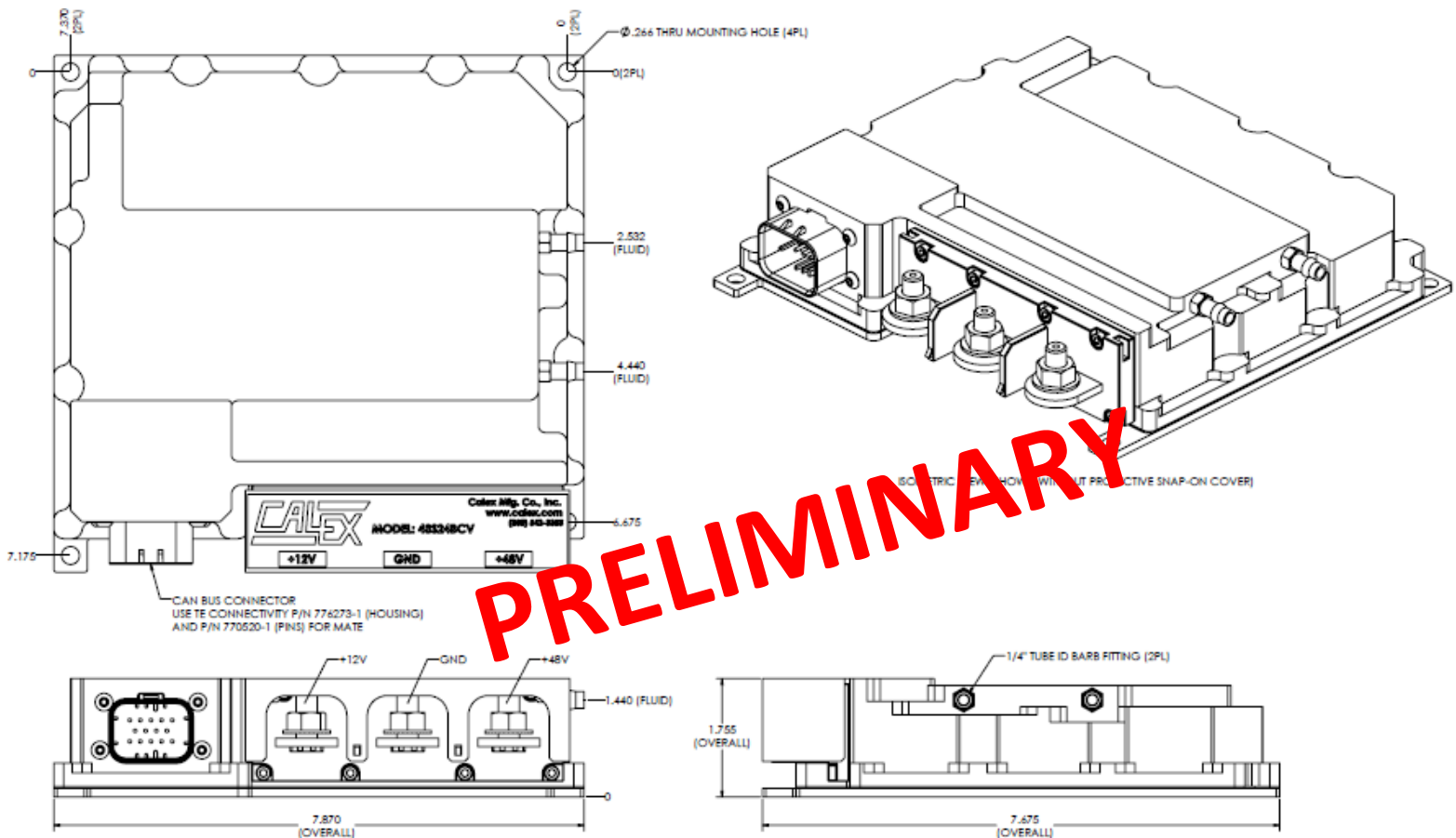


Fig. 10: 48S12.3K0BCE Power Dissipation – Boost Mode Vo=36V.

# 3,000 Watt BCE Bi-Directional Converter



## Mechanical Specification: 48S12.3K0BCE-L



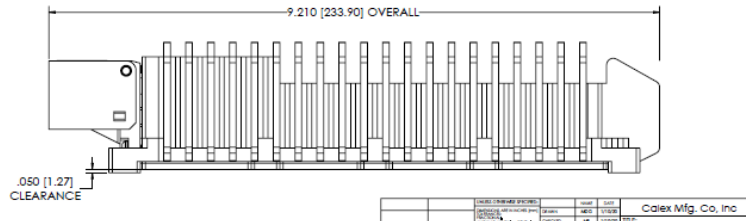
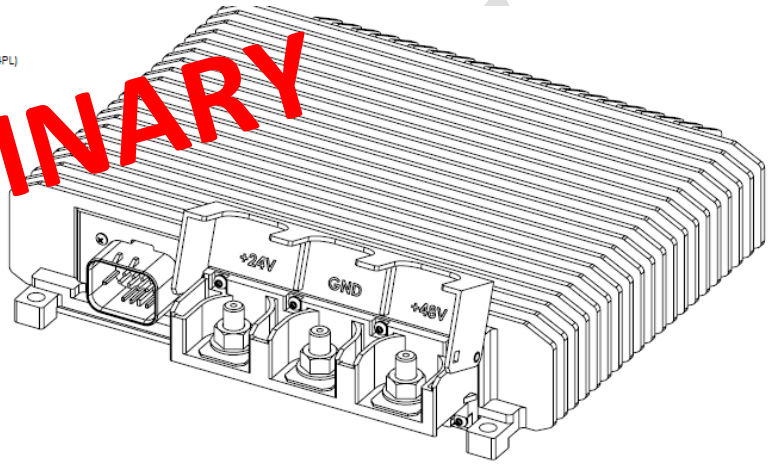
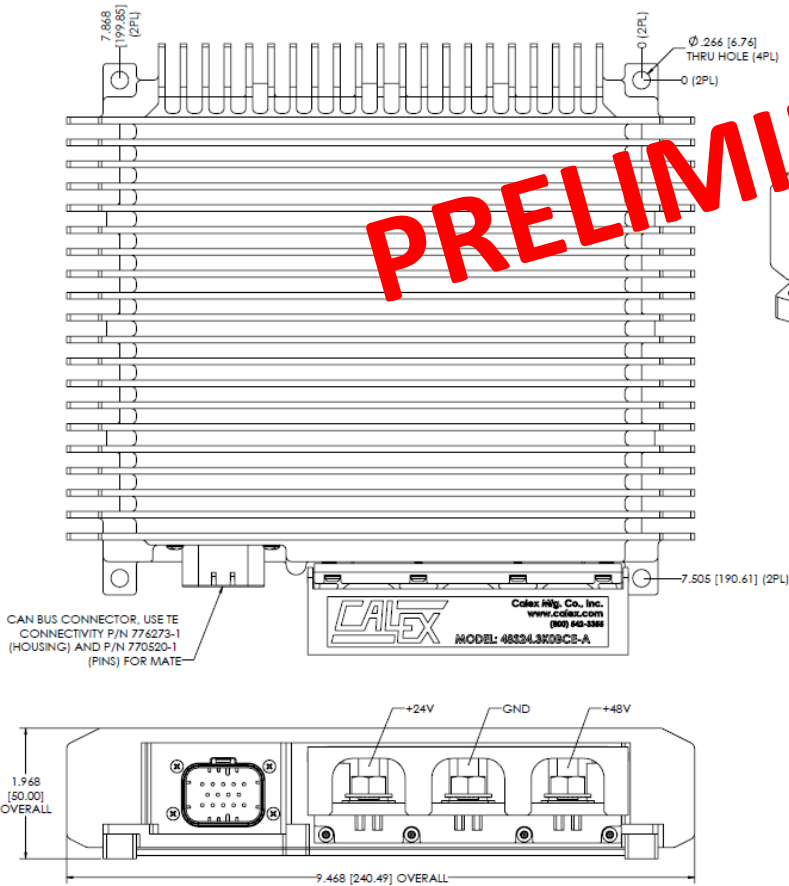
**NOTES:**  
Unless otherwise specified:  
All dimensions are in inches  
Tolerances: x.xx in. ±0.02 in.

# 3,000 Watt BCE Bi-Directional Converter



## Mechanical Specification: 48S12.3K0BCE-A

PRELIMINARY



**NOTES:**  
Unless otherwise specified:  
All dimensions are in inches  
Tolerances: x.xx in. ±0.02 in.