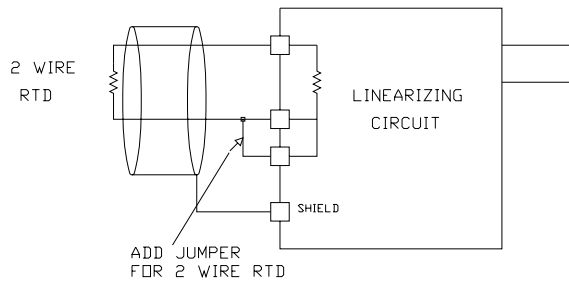
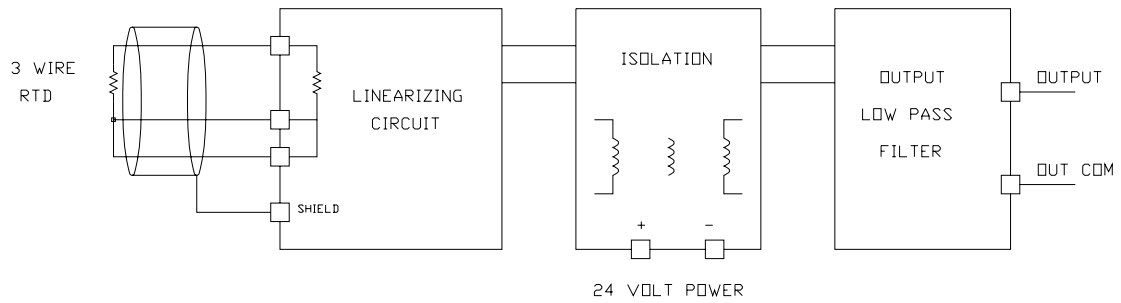
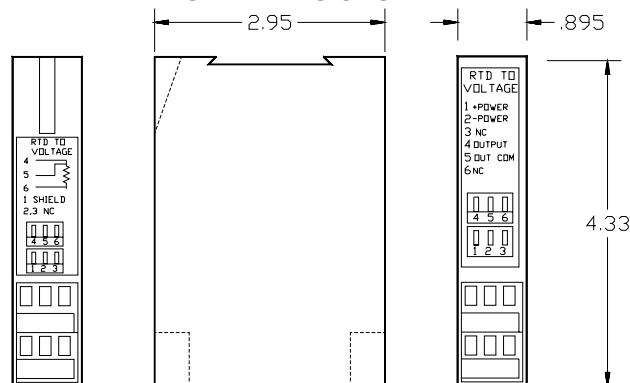


Models 8940, 8941, 8942 Isolated RTD to Voltage

MODEL 8940, 8941, 8942 RTD CONNECTIONS



MODEL 89XX CASE DIMENSIONS



Model	8940-450-DC	8941-450-DC	8942-450-DC
Input	100 Ohm	500 Ohm	1000 Ohm
Temperature Range	-50°C to +450°C	Platinum RTD $\alpha = 0.00385$, 2 or 3 Wire	
Output	0 to +10 Volts 5K Ohm Minimum	0 to +10 Volts 5K Ohm Minimum	0 to +10 Volts 5K Ohm Minimum
Temperature Coefficient			
Zero	0.02°C / °C Typical	0.02°C / °C Typical	0.02°C / °C Typical
Reading	0.015°C / °C Typical	0.015°C / °C Typical	0.015°C / °C Typical
Linearization		±0.7°C Maximum (Does not include RTD error)	
3 Wire Compensation		0.01°C / Ohm - 3 Wires equal R, up to 10 Ohms, Typical	
Response Time	1.5 sec	1.5 sec	1.5 sec
Isolation - 3 Way	700 Volts DC	700 Volts DC	700 Volts DC
Power Requirements		22 to 26 Volts DC, Unregulated 15 mA	
Environment			
Operating		0°C to +55°C	
Storage		-40°C to +80°C	
Physical		Plastic Case (UL-94V-1) with Built in DIN Rail Mounting Foot	
Size		4.33"H x 0.895"W x 2.95"L (110 x 22.5 x 75 mm)	
Weight		5 oz. (142 grams)	
Agency Approvals		UL 508, C22.2 No 14-M91	